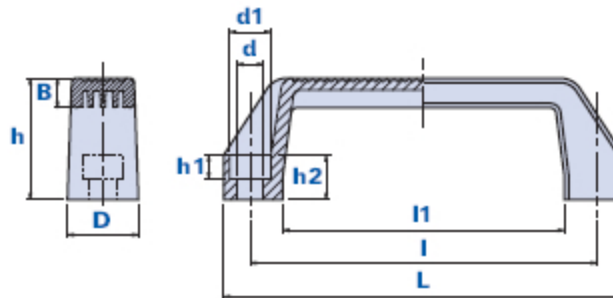


# 1080-1090



## Bridge handle with built-in seat and fixing through cylindrical head screws



| Code         | Description  | Dimensions |    |    |    |     |     |    | Hole |    |    | Weight grams | Stock |
|--------------|--------------|------------|----|----|----|-----|-----|----|------|----|----|--------------|-------|
|              |              | L          | D  | h  | B  | l1  | l   | h2 | d    | h1 | d1 |              |       |
| 108000011700 | 1080-117 D.9 | 135        | 24 | 41 | 10 | 95  | 117 | 15 | 9    | 8  | 14 | 28           | √     |
| 109000017500 | 1090-175 D.9 | 195        | 28 | 50 | 12 | 155 | 175 | 15 | 9    | 8  | 14 | 44           | √     |

### Material

Polyamide-based (PA) technopolymer. Resistant to organic and inorganic chemical substances such as oils, greases, fuels and solvents.

### Colour

Black with satin finish.  
Other colours for suitable quantities.

### Assembly

With cylindrical head screws with built-in hexagon.

### Package

10 - 50 - 100 pcs.